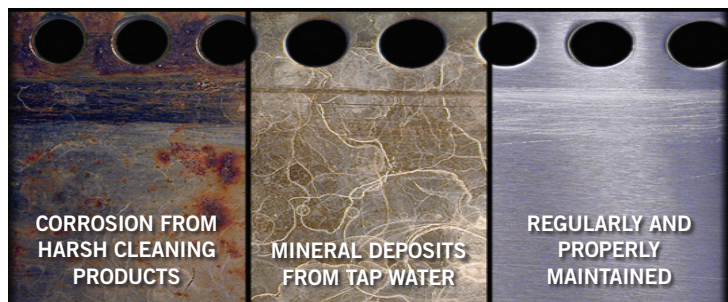


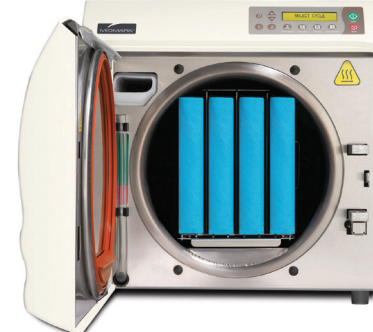
### PREPARING INSTRUMENTS & HANDPIECES FOR STERILIZATION

- Thoroughly clean and dry everything before sterilizing. Debris and bio-burden will compromise the sterilization process
- Wipe off excess lubricant from handpieces
- Never use bleach, tap water, steel wool, scouring powder or wire brushes on the inside of the chamber or on anything that goes into the chamber. Damage will result.
- Separate dissimilar metals: always put stainless steel instruments and carbon steel (such as carbide burs) on different trays
- Carbon steel instruments should be bagged or placed on autoclave towels



### LOADING THE STERILIZER

- Do not overload the chamber
- Allow approximately 1" between trays to permit steam circulation
- Do not stack pouches or cover more than 1/2 of any pouch. Use vertical pouch racks if possible to ensure adequate sterilization and drying
- Never place pouches against the wall
- Packs (cassettes) should be placed vertically if possible, and place approximately 1/4" to 1" from each other
- If using 1/2 paper and 1/2 plastic pouches: Place pouches PAPER SIDE UP for Midmark M9/M11, Tuttnauer (all models), W&H Lisa and SciCan Bravo. Place pouches PAPER SIDE DOWN for Pelton & Crane Delta Q and SciCan Statim (2000, 5000 and 7000)



## MAINTENANCE GUIDELINES



### MIDMARK M9/M11

#### DAILY

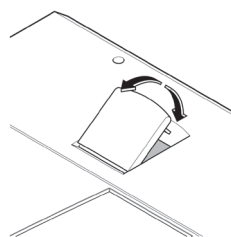
1. Drain water if using large handpiece loads
2. Clean door gasket

#### WEEKLY

1. Unplug the sterilizer
2. Drain water from sterilizer
3. Remove rack and trays
4. Clean rack, trays and chamber
5. Refill reservoir with distilled water

#### MONTHLY

1. Clean chamber and internal plumbing
2. Follow steps 1-4 from the WEEKLY maintenance above
3. Clean internal plumbing (a) Add 1 oz. of SPEED CLEAN directly to bottom of chamber (b) Run POUCHES cycle (c) Press stop button when DRYING cycle begins (d) DRAIN reservoir and refill with distilled water (e) RINSE by running UNWRAPPED cycle (f) DRAIN and REFILL reservoir with distilled water
4. Remove and clean the 2 internal filters in chamber. Make sure to reinstall properly or damage to sterilizer will occur
5. Check pressure relief valve (see operations manual for instructions)
6. Replace gasket every 6 months or as needed



#### WATER

Distilled only

For additional assistance, visit [www.midmark.com](http://www.midmark.com)



### PELTON & CRANE XL8/XL10, DELTA Q

#### DAILY

1. Drain water if using large handpiece loads
2. Clean door gasket

#### EVERY 25 CYCLES OR WEEKLY

1. Unplug the sterilizer (wait 30 minutes for chamber to cool before performing maintenance)
2. Drain water from sterilizer
3. Remove and clean trays
4. Clean the internal plumbing (a) MIX Omni-Cleaner Plus® with distilled water according to directions on bottle (b) POUR into reservoir on top of sterilizer (c) Plug in sterilizer and RUN the UN-WRAPPED cycle (it is not necessary to complete the drying cycle) (d) DRAIN the reservoir for a second time using the drain tube (e) Leave the drain tube in place, POUR 1-2 gallons of water into the reservoir until the drained water is clear (f) WIPE inside chamber with soft cloth (g) RINSE by pouring 1/2 gallon of distilled water into reservoir. Run one unwrapped cycle (it is not necessary to complete drying cycle) (h) WIPE the inside of the chamber and the boiler ring (i) REINSTALL trays



#### MONTHLY

1. Clean water filter inside chamber
2. Remove filter from inside chamber. Place in ultrasonic cleaner and scrub with a brush. Make sure to reinstall properly or damage to sterilizer will occur
3. Replace gasket every 6 months or as needed

#### YEARLY

Change air filter

#### WATER

Distilled to 5 ppm or less

For additional assistance, visit [www.pelton.net](http://www.pelton.net)



### TUTTNAUER CHAMBER (Non Pre-Vacuum)

#### DAILY

1. Drain water if using large handpiece loads
2. Clean door gasket

#### WEEKLY

1. Unplug the sterilizer
2. Clean the Air Trap Jet by moving the clean out wire in and out 10 times. The Air Jet is located in the water reservoir. It is best cleaned while the unit is running (20-30 psi), although this is not mandatory
3. For Electronic models, clean the water sensor in the rear of the chamber with a damp cloth or sponge (cleaning the dirt off the sides of the sensor is more important than the tip)
4. Clean the chamber with Chamber Brite. Sprinkle the Chamber Brite powder along the bottom of a cold autoclave chamber (if the unit is HOT, fill with water first). Run a normal sterilization cycle without drying
5. Drain and flush the solution from reservoir and discard
6. Wipe the inside of chamber with water and a damp cloth or sponge
7. Fill the reservoir with distilled water
8. Clean tray holder and trays with detergent or a non-abrasive stainless steel cleaner and water, using a cloth or sponge
9. Put a few drops of oil on the door hinge pin and door tightening bolt



#### EVERY TWO MONTHS

1. Clean and check the safety valve—see the operations manual for instructions
2. Replace gasket every 6 months or as needed

#### YEARLY

Change air filter if applicable

#### WATER

Distilled to or less than .02mmol/l

For additional assistance, visit [www.tuttnauer.com](http://www.tuttnauer.com)